



 联发股份
JAMES TOWER

James fabric[®]



GROUP OVERVIEW

James Fabric Import & Export Co., LTD is a wholly-owned subsidiary of the listed company Jiangsu Lianfa Textile Co.,Ltd (stock code 002394).

The mother company Lianfa group was founded in 1955. Through 60 years' development, the company had built up a complete industrial chain from cotton processing, dyeing, weaving, finishing, thermal power generation, garment manufacturing, to brand operation and trade, with annual capacity 160 million meters of yarn dyed fabric, 60 million meters of piece dyed, 30 million meters of printing fabric and 9.6 million pieces of shirts. The headquarter is located in Hai'an city, Jiangsu province, which is situated along the shore of Yellow Sea in the Yangtze River Delta economic center, covering land area more than 700,000 square meters, with employee more than 8000, annual sales more than RMB 6 billion. Lianfa is now one of the leading yarn dyed fabric manufacturers.

James fabric®



READY BULK RICH DESIGNS NO MINIMUM QUICK DELIVERY





READY BULK RICH DESIGNS NO MINIMUM QUICK DELIVERY

Spinning Factory

Our spinning factory uses top of the line machines such as Rieter Drawframe's from Switzerland and Murata Automatic Winders from Japan.

With a monthly spinning capacity of more than 700 tons



Dyeing Factory

Our Dye house factory uses top quality machinery such as: Corgi Slack Winders from Italy, BeiningerWarping machines from Switzerland and Beam Cone Dyeing and dispensing Machines from HK Fong's.

With a monthly dyeing capacity of over 1680 tons



Weaving Factory

Our weaving factory is equipped with top of the line machines such as: Toyota Sizing Machines from Japan, Jacquard looms (8 ttl), Rapier Weaving looms (128 ttl) and Toyota Airjet Weaving Machines from Japan (776 ttl)

With a monthly weaving capacity of over 7.1 million meters, over 85 million meters annually



Finishing Factory

Our finishing factory is equipped with high end machinery from Europe, such as: Monforts Stenter & pre shrinking machines from Germany, Sando's Liquid Amonia machines from Japan, Crosta Carbon Peaching Machines from Italy and Calendering machines from Taiwan.

In addition we also provide special finishing like Moisture Cure, Easy Care, Nanotex finishes..

Our finishing capacity is upwards of 10 million meters monthly



SEWAGE TREATMENT PLANT



Total investment: RMB20.000000 Dollars
Sewage Treatment Capability: 20,000ton/day

Design Services

CAD capabilities- Yarn Dye, Print & Jacquard using the following software:
Ned Graphics, YX Weave , Penelope

3D Garment Design capabilities using the following software:
Browzwear and Style 3D

Handloom capacity- Yarn dyed & Jacquard, Piece dyed, 500 handlooms/day, lead time:3-7 days;

Sample Yardage capacity -100 patterns/day, lead time:10-20 days; MOQ of yarn dyed is 30y/color, MOQ of piece dyed is 50y/color

Print strike offs capacity-pigment printing, active printing, digital printing, lead time: 7-10 days



Bulk Production Process

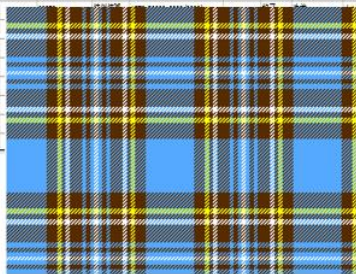
Place the order
in the system

Check the order
instruction

Artwork

江苏联发纺织生产指令反馈单

行号	原料要求值	领导审核值	标准	原序号	测试项目	测试方法	具体测试条件	具体测试代号	要求值	允许偏差	单位
1	0.100%		成分	66106	成分	GB/T 2910-2009			100%100%	%	
2	0.010%		门幅	37818	门幅	ASTM D3774-18			100%100%	cm	
3	1.18~1.70	36647, 36646	缩水率	6622135-20184	缩水率	AAC20135-20184	J,N	0.12224 61138	-3.070	%	
4	1.18	37818, 35287	纱线密度	6578	纱线密度	ASTM D3775-2017a	J,N		91%100%	根/英寸	
5	1.18	108604, 108605	纱线支数	6578	纱线支数	ASTM D1059-17	J,N			S	
6	1	108803	捻度	6578	捻度	ASTM D3776/D3776M-20 (双通)					
7	1	127584	捻度	6622135-20184	捻度	AAC20135-20184	sp12-3		95		
8	1	61.5	幅宽		幅宽					%	
9	1	5.078.0	幅宽		幅宽					cm	
10	1	调湿								/	
11	1	>=4.0								cm	
12	1	>=4.0								cm	
13	1	>=4.0								cm	
14	1	>=4.0								cm	
15	1	>=4.0								cm	
16	1	>=4.0								cm	
17	1	1.18~1.8								cm	



Weaving

Dyeing

Finishing

Testing

Packing

Inspection

FACTORY YARN PRODUCTION PROCESS

Method : Beam dyeing & Packaged Dyed



FACTORY YARN PRODUCTION PROCESS

BEAM DYEING



READY BULK RICH DESIGNS NO MINIMUM QUICK DELIVERY

FACTORY YARN PRODUCTION PROCESS



PACKAGED DYEING

READY BULK RICH DESIGNS NO MINIMUM QUICK DELIVERY

FACTORY PRODUCTION

FABRICS WEAVING



READY BULK RICH DESIGNS NO MINIMUM QUICK DELIVERY

FACTORY PRODUCTION

FABRICS PIECE DYEING



FACTORY PRODUCTION

FABRICS FINISHING



READY BULK RICH DESIGNS NO MINIMUM QUICK DELIVERY

FACTORY TESTING

100 % FULL INPERSON INSPECTION



READY BULK RICH DESIGNS NO MINIMUM QUICK DELIVERY

FACTORY TESTING

IN HOUSE LABORATORY TESTING

World Class Inhouse Laboratory providing AATCC, ASTM, JIS & ISO Testing Services

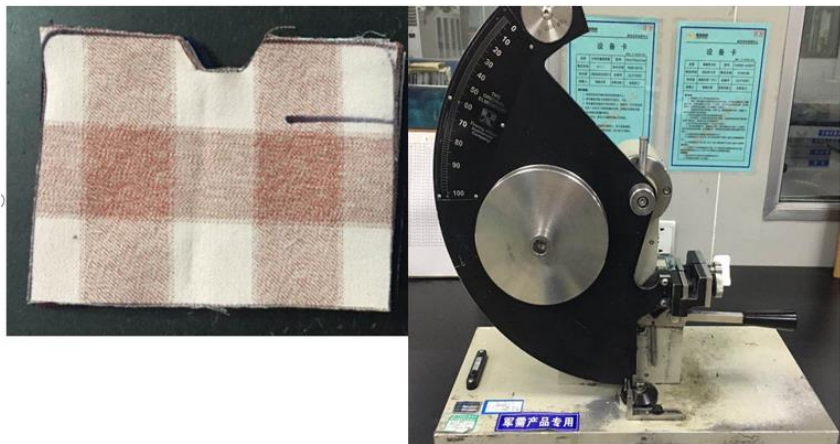
In-house Laboratory

Invest a million HKD to set up a world class Inhouse laboratory provides AATCC,ASTMD,JIS& ISO full test service



FACTORY TESTING

TEAR STRENGTH TESTING



FACTORY TESTING

TENSILE TESTING



FACTORY TESTING

PILLING RESISTANCE TESTING



FACTORY TESTING

Test report-example:



面料测试报告单 TEST REPORT



CODE NO.: LF-WCBD-029

REPORT TIME: 20240706

REPORT NO.	YR202207066014	MILL NO.	CM0229WHI	COLOR NO.
TESTING STANDARD NO.	JAMES01	CONSTRUCTION	50 竹涤*50 竹涤 150*90	WIDTH:

TEST NAME	TESTING METHOD	APPLICANT'S REQUIREMENT	RESULT
WIDTH		144.8~147.3cm	150.2
THREAD COUNT	ASTM D3775-2017e1		J:148, W:92
DIMENSIONAL STABILITY AATCC135-2018t (1) L11A (i) 3 TO WASHING X		J: -3.0%~0.0, W: -3.0%~0.0	J: -1.7, W: -
DIMENSIONAL STABILITY GB/T 8629:20012A (F) 1X TO WASHING		/	J: -3.7, W: -
APPEARANCE RETENTION AFTER LAUNDERING AATCC135-2018		SATISFIED/, PILLING RESISTANCE>=4.0, COLOUR CHANGE>=4.0, COLOUR STAINING >=4.0, SELF STAINING >=4.0	SATISFIED, RESISTANCE CHANGE: 4.5 STAINING STAINING :
DIMENSIONAL STABILITY TO IRON			J: +0.7, W: +
PH VALUE		5.0~7.0	6.0
TEAR STRENGTH	ASTM D1424-21	J:>=1.81bf, W:>=1.81bf	J: 7.2, W: 4.
TEAR STRENGTH	GB/T 3917.2-2009	/	J: 25.7, W: 2

TENSILE STRENGTH	ASTM D5034-21	J:>=251bf, W:>=251bf	J: 112.3, W: 72.5
SEAM SLIPPAGE	ASTM D434-95AS RECEIVED	J:>=181bf, W:>=181bf	J: 52.0 (1/4"), S STRENGTH: 67.2 C
SEAM SLIPPAGE	GB/T 2660-200880N	J:<=0.6cm, W:<=0.6cm	J: 0.20, W: 0.17
FABRIC WEIGHT			120
BOW		Other <=2.0%	0.1
YARN SIZE	ASTM D1059-17	/	J: 47.2, W: 43.5
PILLING RESISTANCE	GB/T4802.1-2008	Other >=3.0	4.0
PILLING RESISTANCE			4.0
COLOR FASTNESS TO CROCKING	AATCC8-2016e	/	/, /
COLOR FASTNESS TO CROCKING	GB/T 3920-2008	DRY >=4.0, WET Other >=3.0	>=4.0, >=3.0
COLOR FASTNESS TO CROCKING		, DRY >=4.0	/, >=4.0

COLOR FASTNESS TO DRY AATCC132-2004e3 (2013) e3 CLEANING	COLOUR CHANGE>=4.0, COLOUR STAINING >=4.0	COLOUR CHANGE:>=4.0, ACETATE:>=4.0, COTTON:>=4.0, NYLON:>=4.0, POLYESTER:>=4.0, ACRYLIC:>=4.0, WOOL:>=4.0	YES
BLEEDING	>=4.5	4.5	YES
COLOR FASTNESS TO HOT AATCC133-2020e PRESSING	COLOUR CHANGE>=4.0, COLOUR STAINING >=4.0	COLOUR CHANGE: 4.5, COTTON: 4.5	YES
COLOR FASTNESS TO AATCC16-202020 HOURS LIGHT	≥3.0	4.5	/

The result instruction:
The units of result is the same as standard. If the customer have a special request, will give another indication
SEAM SLIPPAGE: FTS Fabric broken at the sewing thread; STB: Sewing thread broken; FR: the Fabric Broken;
The fiber sequence of AATCC/ISO color staining: Acetate/Cotton/Nylon/Polyester/Acrylic/Wool;
Using silk for JIS stain color fastness when buyer requests.

Sample

TEST NAME	TESTING METHOD	APPLICANT'S REQUIREMENT	RESULT
COLOR FASTNESSTO WASHING	AATCC61-2013e (2020) 2A	COLOUR CHANGE >=4.0, COLOUR STAINING >=4.0	COLOUR CHANGE:>=4.0, AC>=4.5, COTTON:>=4.5, POLYE=4.5, ACRYLIC:>=4.5
COLOR FASTNESS TO PERSPIRATION	AATCC15-2021	COLOUR CHANGE >=4.0, COLOUR STAINING >=4.0	COLOUR CHANGE:>=4.0, AC>=4.5, COTTON:>=4.5, NYLON:>=4.5, POLYE=4.5, ACRYLIC:>=4.5
COLOR FASTNESS TO WATER	AATCC107-2013e2	COLOUR CHANGE >=4.0, COLOUR STAINING >=4.0	COLOUR CHANGE:>=4.0, AC: 4.5; NYLON: >=4.5; COTTON: >=4.5; POLYESTER: >=4.5; ACRYLIC: >=4.5; WOOL: >=4.5
COLORFASTNESS TO NON-CHLORINE BLEACH		>=3.5	4.5

General Manager *Lin Li Hua*
END
Declare: This report to send or take of the examination sample be responsible for.
LAB NAME: JiangSu LianFa textiles Stock Co. Ltd. Textile laboratory
ADDRESS: #88 HengLian Road, Hai'an Town, Nan Tong, Jiangsu
TEL: 88905122 E-mail: G1-lab@lianfa.cn

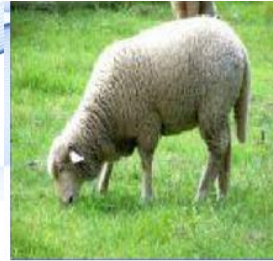
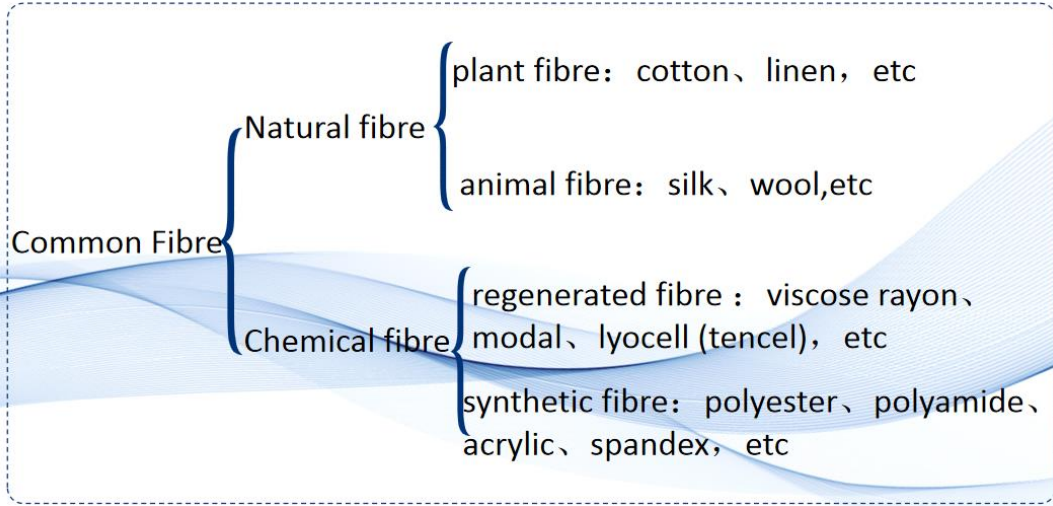
ESIGNS NO MINIMUM QUICK DELIVERY

FACTORY QUALITY CONSISTENCY CERTIFICATIONS

- Lab Certification



Fiber



Yarn

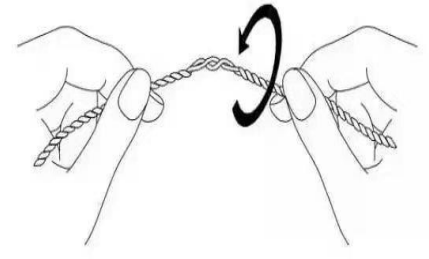
Cotton	10S、21S、32S、40S、50S、60S、70S 、80S、21/2、32/260/2、80/2、 100/2、120/2、140/、140/3、160/3	100%cotton
Cotton/polyester	32S、45S	C55T45
		C60T40
	80S/2、100S/2	C60T40
		C80T20
Bamboo/polyester	32S、40S、50S	TCX50B50
COTTON/COOLMAX、 THEMOLITE	32S、40S、50S	C50/COOLMAX50
		C60/COOLMAX40
		C50/THEMOLITE40
COTTON/Tencel, Cotton/Modal, Cotton/Rayon)	100S/2	C75F25
	21S、32S、40S、50S、60S	C70F30
		C60F40
		C50F50
COTTON/WOOL	32S、40S、50S	C90W10
		C85W15
		C80W20
polyester/linen/tencel	50S/2、60S/2	T42L40F16
		T44L32F26
COTTON/LINEN	30S、50S、60S	C70L30
		C80L20



two-ply yarn



three-ply yarn



READY BULK RICH DESIGNS NO MINIMUM QUICK DELIVERY

FABRIC DYESTUFF TYPES



HUNTSMAN

Enriching lives through innovation



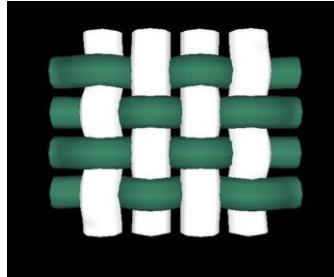
Cooperate with global top supplier of dyes and additives, such as ,DyStar , Huntsman, to protect the environment

- Better reproducibility than commodities
- Versatile application
- Meet standard retailer performance requirements

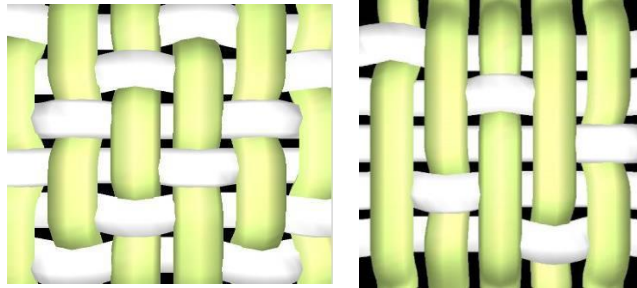
READY BULK RICH DESIGNS NO MINIMUM QUICK DELIVERY

WEAVING TYPES

Fabric Weaving
—Three foundation weave



poplin



twill

satin

→weft

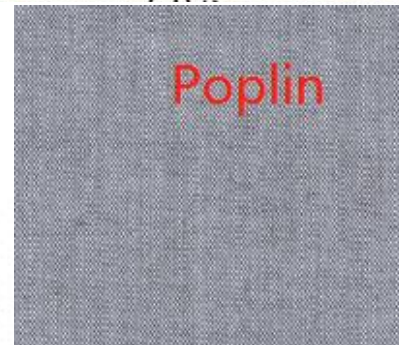
↓
w
a
r
p



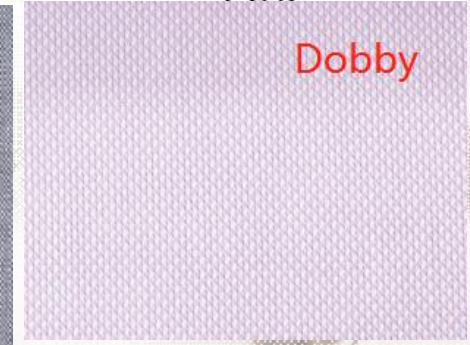
S twill



z twill



Poplin

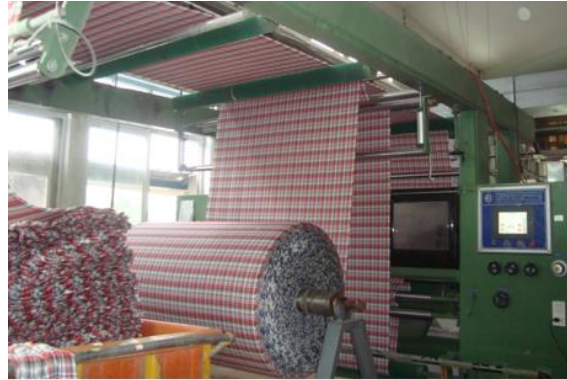


Dobby

FINISHING

Machine Finishing

- Mercerized
- Regular soft
- Peaching
- Carbon peaching
- Brushing
- Air washing
- Clipping
- Calender finish
- Seersucker finishing
- Physical spandex
- Slack finishing



Functional Finishing

- Wrinkle Free
- Formaldehyde Free Non -iron
- Easy Care
- Silky
- Liquid Amonia
- Teflon
- Quick Dry
- Soil Release
- Water Proof
- Stain Resistant
- Anti-Bacterial
- Anti-UV
- Coolmax Coolplus

READY BULK RICH DESIGNS NO MINIMUM QUICK DELIVERY

PRINTING FABRIC

Screen S/O making



READY BULK RICH DESIGNS NO MINIMUM QUICK DELIVERY

PRINTING FABRIC

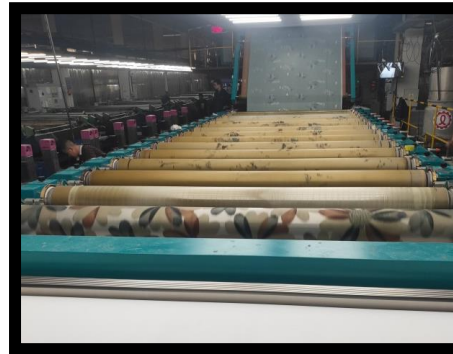
Screen Printing

- .Pigment Printing

Used for cotton/polyester, polyester, polyamide

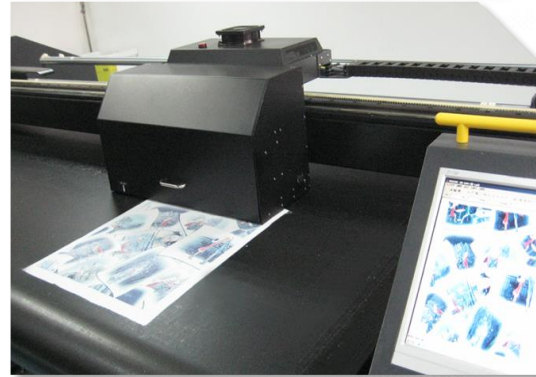
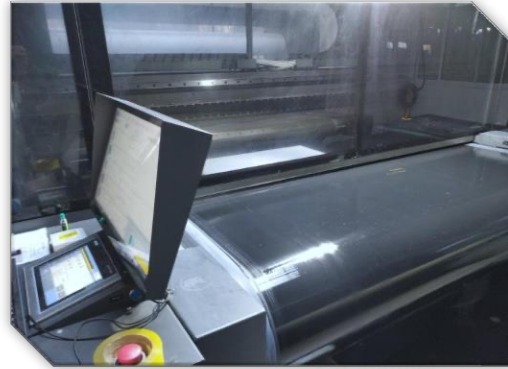
- .Reactive Printing

Used for natural fiber (like cotton, linen) and regenerated fibre (like rayon , modal, tencel)



PRINTING FABRIC

Digital S/O making



READY BULK RICH DESIGNS NO MINIMUM QUICK DELIVERY

PRINTING FABRIC

Digital printing

Used for natural fiber (like cotton, linen) and regenerated fibre (like rayon , modal, tencel)



JAMES FABRIC

A 3D rendered scene with a dark red background. In the center, a white sphere is positioned above a path of dark red fabric that leads to a reflective surface. The text "THANK YOU" is overlaid in the center of the scene.

**THANK
YOU**